

National
Volunteer
Management
Conference

Masterclass (*purple*)
**Exploring a framework for
promoting values-led
practice in volunteering**

Fiachra Brennan
Solidarity and Capacity Building
Coordinator, Comhlámh



About us



- Founded in 1975 by returned volunteer development workers
- Member organisation
- Working to mobilise for an equitable and sustainable world

About the Code

- Developed in early 2000s in response to shifts in international volunteering
- Rise in short-term placements and voluntourism.
- We brought together stakeholders to identify key principles for values-based international volunteering.



About the Code

- The Code is all a journey for us all
- The values, principles, and indicators are regularly reviewed
- This process is informed by the experiences of Comhlámh, volunteer sending agencies, and partners and communities in the Global South.



Our Values



Solidarity



Social Justice



Ecological
Sustainability



Respect



Integrity

Where we are now



Where we are now

- Processes informed by Global Citizenship Education approaches
- Delving into discomfort, colonialism, racism, ethnocentrism
- Going back to our roots – relationality, encounter, and connection



Where we are now

- Working through a lens of ecological sustainability
- Introducing ideas and approaches from permaculture
- Another way of doing things
- Exploring generative questions
- Creating brave spaces



Where we are now

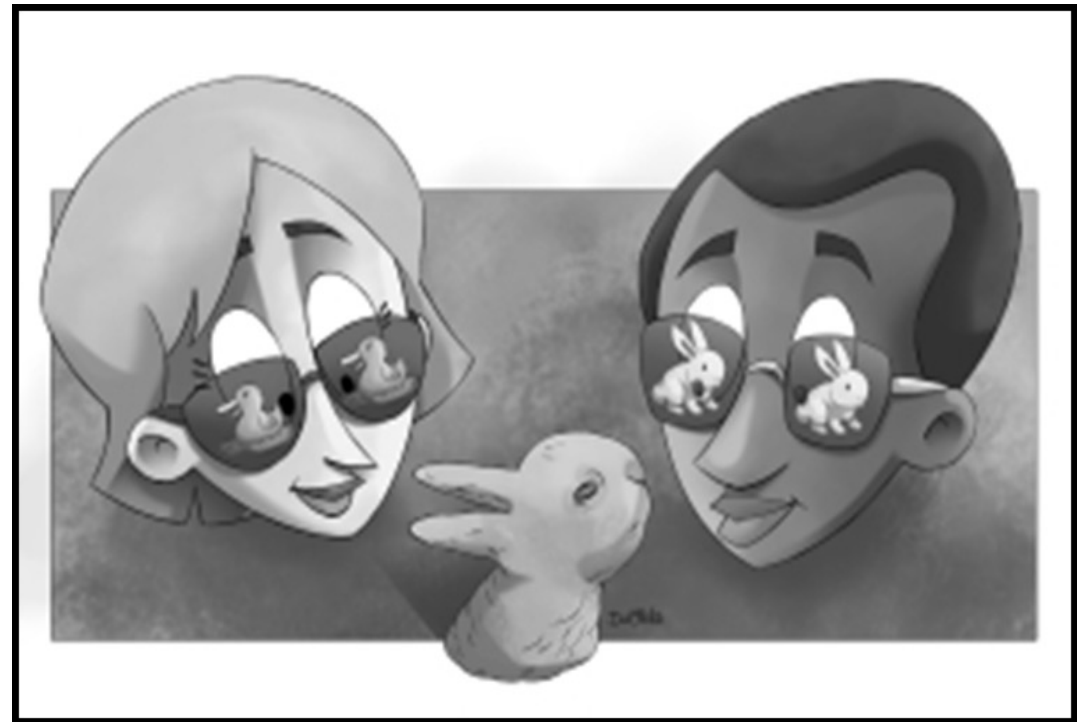
- A strong community of practice and peer learning
- Space for depth
- Supporting learning and shifts in practice
- Different kinds of connections and exploration with colleagues
- Action experimenting
- Reflective practice by living, learning organisations

1. Everyone has a specific way of knowing and viewing the world dependent on their lenses and their rucksacks!



Open Space for Dialogue and Enquiry (OSDE)

2. All
knowledge or
view is partial
and incomplete





3. All knowledge or
views can be
questioned

Learnings

- Importance of connection
- Comhlámh as a critical friend
- Meeting people and organisation where they are at
- Small is all (the large is a reflection of the small)
- Change is non-linear

Contact Us



fiachra@comhlamh.org